

Works by Stephen Hogbin for sale

The following works by Stephen Hogbin are available for sale. Pick up from Owen Sound or Toronto areas are preferred. If shipping is required packing, handling, shipping and insurance are at the cost of the purchaser. Most images were taken by Stephen Hogbin at time of making and information is from his records as best as can be determined. The images are copyright and may not be reproduced without permission. All pieces are sold as is. Prices are in Canadian dollars. A portion of the proceeds will be donated to Intersections Wood Collaborative which is a non-profit started by Stephen before his death and/or a scholarship in Stephen's name hosted at Community Foundation Grey Bruce. To purchase or for additional information please contact Stephen's daughter Rebecca Raynsford at rebeccaraynsford@gmail.com.



#001
Two Halves Whole
1971
Hard maple
11" diameter
Face plate edge profile
\$1600



#007
Plate
1971
Hard Maple
17" long
Face plate three segments
\$800



#25
Face Plate halved
Not signed
\$375



#44
Bowl Molten Edge
1972
12" diameter
Alumimum
Face plate halved Styrofoam Sandcasted
\$1800



#131
Sculpture
Elm
1974
13x25x3"
Face plate carved edge
\$700



#149
1974
Limited numbers remaining
\$95 each



#152
1974
8" Diameter
Aluminum
Limited numbers remaining
\$75 each



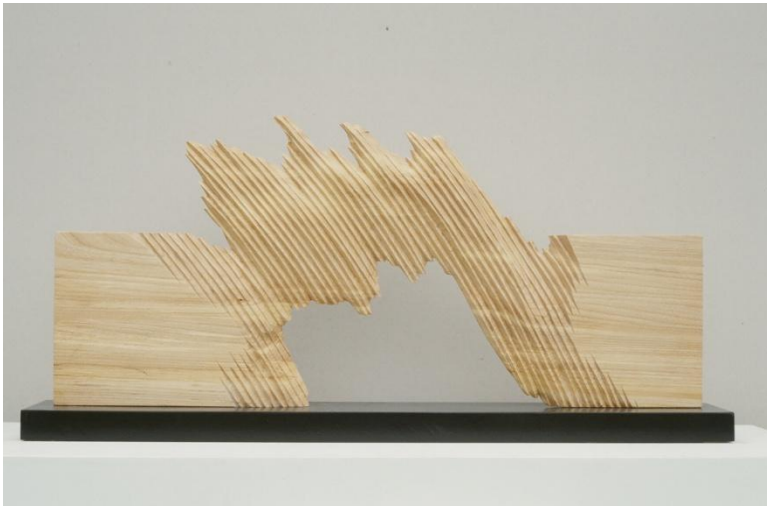
#153
1974
Face Plate Wedge removed
Aluminum
Limited numbers remaining
\$75 each



#157
1974
Spindle wedge
Limited numbers remaining
\$75 each



#182
Sculpture
1975
Cedar
16" Wide
\$275



#328
Wind Arch
1977
Elm
36cm high
Milled free
\$750



#362
Cosmic Egg
1978
Red Oak
86 cm long, 51 cm wide, 19 cm high
Milled Free Carved
\$1600



#410
Pierced Leaf
1979
Walnut
270cm high
Milled
\$2400



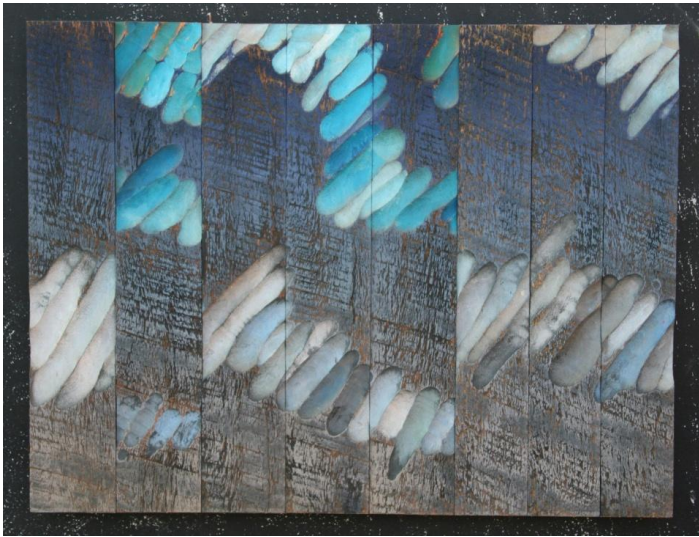
#614
Spontaneous lons
94x106 cm
1984-1987
Painted relief
\$500



Not numbered
Front and back as shown
24" long by 14" high
\$250



Not numbered II
Front and back as shown
24" long by 14" high
\$250



#644
 Untitled
 1985
 60x46 cm
 Polychromed ink and Acrylic
 \$350



Framed photographic relief
 1983
 \$250



#707
 Fragmented figure
 1981-1986
 Walnut
 20x9x13"
 Cut out
 \$550



One Hand Washing
 1991
 #1/20 (shown) and #17/20
 \$225 each



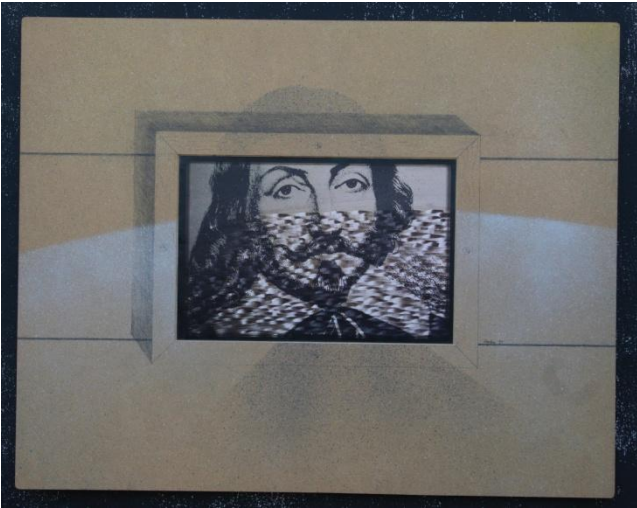
#742
Ice Flow
1978
White Pine
48 cm high
Milled Free
\$1500 (does not include stand)



#768
Dark or light
1988
Wood Paint
Zebra wood and pine
52x50"
Only the piece on the right is available (that looks like a tree). Piece on left already sold.
\$500



30x53"
\$500



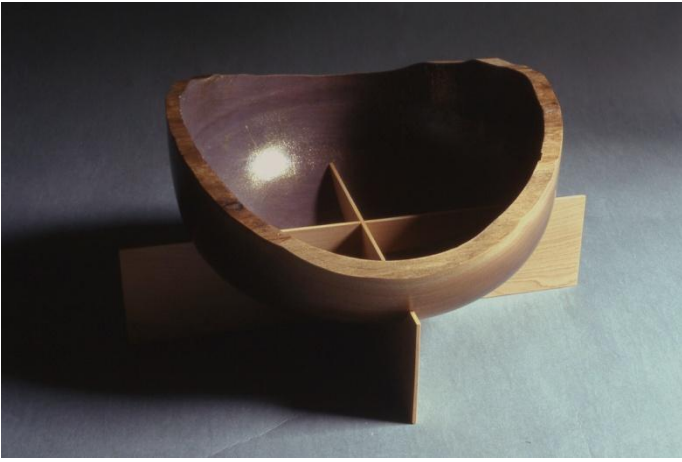
#989
1995
24x30"
On wood
\$250



Photograph of installation with paint
\$250



Framed, Feathered and Tarred
1995
24x30"
On wood
\$250



#1051
Walnut bowl with leg structure
1996
Walnut Apple Urethane
16" leg width x 12" diameter
\$750



1087
Illuminated thread
1997
Mirror wood and paint
33.5 x 39 x 10"
\$450



#1092
 Blue cymbella
 Ash birch ply photo paint
 (rocks not available)
 15x12x6"
 Scratch on mirror
 \$200



#1034
 Squared
 1996
 Ash Pine Paint
 11x15x9"
 \$100



#1318
Chair
2003
Ebonized Ash Paint red dot
35x20x20
\$1400



#1453
Pegged Bowl
2002
Ash Paint
17.5x8.5"
\$550



#1465
Blue Green shift
2012
Maple paint
5.5x15" diameter
\$750



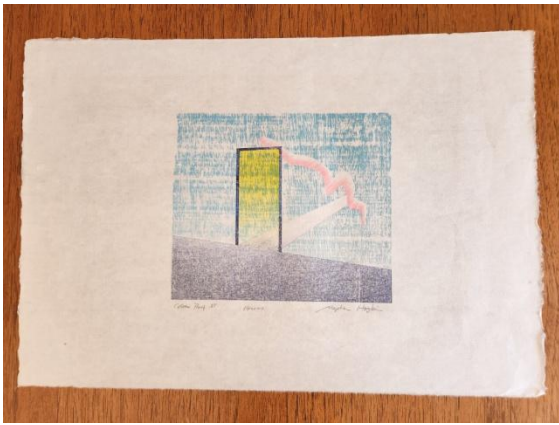
#1479
Pattern from Process I
2012
Walnut and paint
3.5" x 10" diameter
\$450



#1508
Yellow and blue
2013
Maple paint
8x8"
\$350



#1511
Organic green
2013
Walnut paint
8 diameter x7.5"
\$350



Color proof
1985
17x24.5"
Unframed
\$125



Meaford Tank Range
1992
19x21"
Unframed
\$125



Garden stone
1989
17x26"
Unframed
\$125



Scenic business
1986
26x19"
Unframed
\$125



Untitled
 1992
 30x22.5"
 Unframed
 \$125



Untitled
 1992
 22.5x30"
 Unframed
 \$125



Cradle
Basswood and paint
\$1800

POSTERS:

100% of the proceeds to non-profit: *Intersections Wood Collaborative* in Owen Sound, Ontario



Posters

\$15 each

100% poster proceeds to Intersections Wood Collaborative, Owen Sound, Ontario

Pick up preferred. If shipping is required please add the cost of shipping, packing material and handling

BOOKS:

Books available by Stephen Hogbin

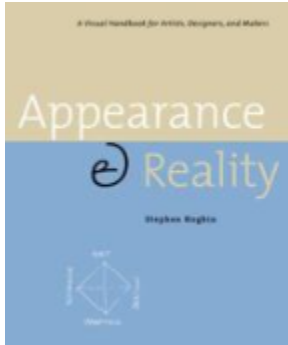
Please contact:

The Ginger Press Bookshop

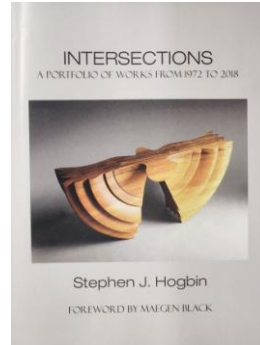
848 Second Avenue East Owen Sound, ON N4K 2H3

Website: gingerpress.com

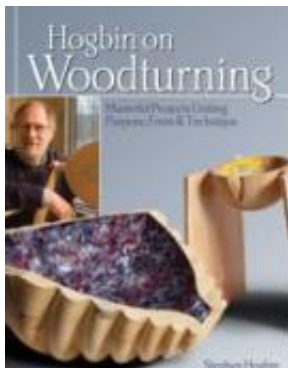
Email: maryann@gingerpress.com



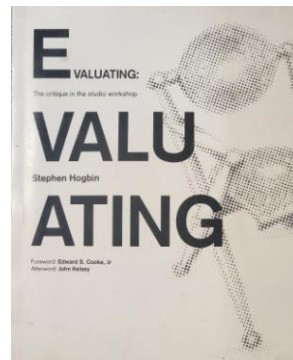
Appearance & Reality: a visual handbook for Artists, Designers, and Makers



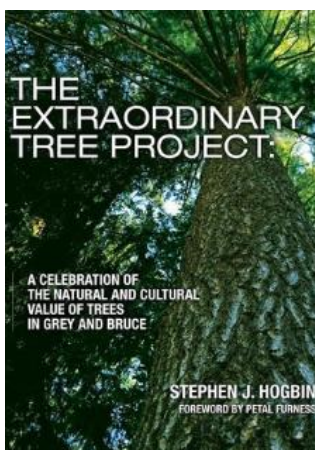
INTERSECTIONS A portfolio of work from 1972 to 2018



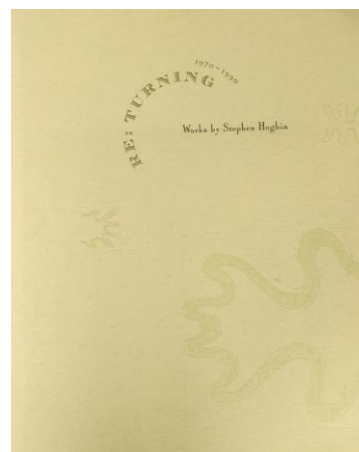
Hogbin on Woodturning



*EVALUATING
The critique in the studio workshop*



The Extraordinary Tree Project: a celebration of natural and cultural value of trees in Grey and Bruce



Re: Turning 1970 to 1990 Works by Stephen Hogbin

End of document

October 27, 2024